

A Comprehensive Line Of Refrigeration And Ice Machines

MAXXIMUM

A DIVISION OF THE LEGACY COMPANIES



❄ MAXX COLD

❄ MAXX COLD
X-series

❄ MAXX ICE

2015 BROCHURE

MAXXIMUM

A DIVISION OF THE LEGACY COMPANIES

Maximum features a full line of quality products to meet your refrigeration and ice machine needs. Maximum quality, durability, performance and value. That's what you get with Maxx Cold refrigeration and Maxx Ice ice machines.



MAXX COLD

The ultimate choice for an all stainless steel refrigerator or freezer. Designed with style and energy savings in mind these units look right at home in any setting while providing unequalled quality and performance.

MAXX COLD *X-series*

When you're looking for the maximum in savings, X marks the spot. The ultimate in value with a stainless exterior and coated aluminum interior these units are designed with features usually reserved for higher priced units. Quality and value are at the X.

MAXX ICE

The clear choice for quality ice. Maxx Ice represents the most efficient and cost effective method of meeting your ice needs. Designed to incorporate maximum energy and water conservation and built to produce ice simply and efficiently, Maxx Ice is the clear choice for maximum value.

TABLE OF CONTENTS

Reach-in Refrigeration	1
Top Mount Reach-in Refrigeration	2
X-series Reach-in Refrigeration	3
Glass Door Refrigeration	4
X-series Economy Reach-in Refrigeration	5
X-series Countertop/Glass Door Merchandisers	8-9
Undercounter Refrigeration	8
X-series Undercounter Refrigeration with & w/out Drawers.....	9-10
Sandwich Units	11
X-series Sandwich Units with & w/out Drawers	12-13
Megatops	14
X-series Megatops Sandwich Units with & w/out Drawers	15-16
Pizza Prep Tables	16
X-series Pizza Prep Tables with & w/out Drawers	17-19
Chef Bases	20
X-series Bottle Coolers.....	21
Back Bar Coolers	22
Keg Coolers with Tower	23
Compact I/O Refrigeration/Wine Coolers/Ice Machines & Bins	24-29
 Limited Warranty	30





MAXX COLD

REACH-IN REFRIGERATION

- Stainless steel exterior and interior ensures years of long life and maximum durability
- CFC-free polyurethane foam insulation
- (3) heavy-duty, adjustable, PE coated wire shelves per section
- Door locks and 4" diameter swivel casters come standard
- Utilizes environmentally friendly CFC-free refrigerant, Refrigerator R134A / Freezer - R404A
*Except Freezer MCF-23FD uses R134A
- Automatic defrost system
- Digitally controlled temperature system maintains optimum temperature and LED display is easily viewed from exterior
- Holding temperature:
Refrigerator: 28°F to 39°F, Freezer: -9°F to 5°F
- Open door alert, beeps when door has been open for 3 minutes
- Large evaporator and condenser for quick cooling and greater efficiency
- Automatic interior lighting
- Self contained system
- Recessed handles
- Available in 120V/60Hz, 220V/50Hz and 208-230V/60Hz



Maxx Cold reach-in refrigeration is built to last. Temperature is digitally controlled and easily viewed from the exterior of the cabinet. Stainless steel construction ensures years of long life and maximum durability. Maxx Cold units are designed to meet the requirements of the most discriminating customer.



MCR-23FD
Doors are reversible
(additional parts required)



MCR-49FD

Model	Dim (W"xD"xH")	Capacity	Temp	Amps	Doors	Weight	Shelves
MCR-23FD Refrigerator	26.8 x 31 x 82.4 680 x 787.4 x 2093 mm	23 Cu Ft 651 L	28° to 39°F -2° to 4°C	6	1	240 lb 109 kg	3
MCF-23FD Freezer	26.8 x 31 x 82.4 680 x 787.4 x 2093 mm	23 Cu Ft 651 L	-9° to 5° F -23° to -15° C	7	1	245 lb 111 kg	3
MCR-49FD Refrigerator	54 x 31 x 82.4 1372 x 787.4 x 2093 mm	49 Cu Ft 1,387 L	28° to 39°F -2° to 4°C	7	2	370 lb 168 kg	6
MCF-49FD Freezer	54 x 31 x 82.4 1372 x 787.4 x 2093 mm	49 Cu Ft 1,387 L	-9° to 5° F -23° to -15° C	11.8	2	403 lb 183 kg	6

TOP MOUNT REACH-IN REFRIGERATION



MAXX COLD

Maxx Cold top mounted compressor reach-in refrigeration is built to last. Temperature is digitally controlled and easily viewed from the exterior of the cabinet. Stainless steel construction ensures years of long life and maximum durability. Maxx Cold units are designed to meet the requirements of the most discriminating customer.



MCRT-23FD



MCRT-49FD



MCRT-72FD

- Top-mounted compressor
- Stainless steel exterior and aluminum (1+2 door) or stainless steel (3 door) interior ensures years of long life and maximum durability
- CFC-free polyurethane foam insulation
- (3) heavy-duty, adjustable, PE coated wire shelves per section
- Door locks and 4" diameter swivel casters come standard
- Utilizes environmentally friendly CFC-free refrigerant, refrigerator R134A / Freezer - R404A
- Automatic defrost system
- Digitally controlled temperature system maintains optimum temperature and LED display is easily viewed from exterior
- Holding temperature:
Refrigerator: 28°F to 39°F, Freezer: -9°F to 5°F
- Open door alert, beeps when door has been open for 3 minutes
- Large evaporator and condenser for quick cooling and greater efficiency
- Automatic interior lighting
- Self contained system
- Recessed handles
- Available in
120V/60Hz, 220V/50Hz and 208-230V/60Hz
(MCFT-72FD is 115V-208/230V/60Hz/1Ph)



Model	Dim (W"xD"xH")	Capacity	Temp	Amps	Doors	Weight	Shelves
MCRT-23FD Refrigerator	26.8 x 31 x 82.4 680 x 787.4 x 2093 mm	23 Cu Ft 651 L	28° to 39°F -2° to 4°C	5	1	233 lb 106 kg	3
MCFT-23FD Freezer	26.8 x 31 x 82.4 680 x 787.4 x 2093 mm	23 Cu Ft 651 L	-9° to 5°F -23° to -15°C	8	1	248 lb 112 kg	3
MCRT-49FD Refrigerator	54 x 31 x 82.4 1372 x 787.4 x 2093 mm	49 Cu Ft 1,387 L	28° to 39°F -2° to 4°C	6.3	2	348 lb 158 kg	6
MCFT-49FD Freezer	54 x 31 x 82.4 1372 x 787.4 x 2093 mm	49 Cu Ft 1,387 L	-9° to 5°F -23° to -15°C	10.5	2	381 lb 173 kg	6
MCRT-72FD Refrigerator	81 x 31 x 82.4 2057 x 787 x 2093 mm	72 Cu Ft 2,039 L	28° to 39°F -2° to 4°C	11.1	3	503 lb 228 kg	9
MCFT-72FD Freezer	81 x 31 x 82.4 2057 x 787 x 2093 mm	72 Cu Ft 2,039 L	-9° to 5°F -23° to -15°C	8.7/4.9*	3	556 lb 252 kg	9



MAXX COLD

X-series

REACH-IN REFRIGERATION

- Stainless steel exterior and painted aluminum interior ensures years of long life and maximum durability
- CFC-free polyurethane foam insulation
- (3) heavy-duty, adjustable, PE coated wire shelves per section
- Door locks and swivel casters come standard
- Utilizes environmentally friendly CFC-free refrigerant, Refrigerator R134A / Freezer - R404A
- Automatic defrost system
- Digitally controlled temperature system maintains optimum temperature and LED display is easily viewed from exterior
- Holding temperature:
Refrigerator: 33°F to 41°F, Freezer: -10°F to 10°F
- Large evaporator and condenser for quick cooling and greater efficiency
- Automatic interior lighting
- Self contained system
- Recessed handles
- Available in 120V/60Hz, 220V/50Hz and 208-230V/60Hz (MXCF-72FD is 115/208-230V/60Hz)



Maxx Cold X-Series Reach-In Refrigeration is designed for the ultimate in value. Temperature is digitally controlled and easily viewed from the exterior of the cabinet. Stainless steel exterior construction ensures years of long life and maximum durability. Maxx Cold X-Series provides unsurpassed quality at a value price.



MXCR-23FD
115V /60HZ



MXCR-49FD



MXCR-72FD

Model	Dim (W"xD"xH")	Capacity	Temp	Amps	Doors	Weight	Shelves
MXCR-23FD Refrigerator	26.8 x 32.7 x 82.3 681 x 831 x 2090 mm	23 Cu Ft 651 L	33° to 41°F .5° to 5°C	6	1	282 lb 128 kg	3
MXCF-23FD Freezer	26.8 x 32.7 x 82.3 681 x 831 x 2090 mm	23 Cu Ft 651 L	-10° to 10° F -23° to -12° C	11	1	305 lb 138 kg	3
MXCR-49FD Refrigerator	53.9 x 32.7 x 82.3 1369 x 831 x 2090 mm	49 Cu Ft 1,387 L	33° to 41°F .5° to 5°C	9	2	457 lb 207 kg	6
MXCF-49FD Freezer	53.9 x 32.7 x 82.3 1369 x 831 x 2090 mm	49 Cu Ft 1,387 L	-10° to 10° F -23° to -12° C	5	2	468 lb 212 kg	6
MXCR-72FD Refrigerator	81 x 32.7 x 82.3 2057 x 831 x 2090 mm	72 Cu Ft 2,039 L	33° to 41°F .5° to 5°C	10	3	468 lb 212 kg	9
MXCF-72FD Freezer	81 x 32.7 x 82.3 2057 x 831 x 2090 mm	72 Cu Ft 2,039 L	-10° to 10° F -23° to -12° C	8	3	563 lb 255 kg	9

GLASS DOOR REACH-IN REFRIGERATION



MAXX COLD

Maxx Cold Glass Door Reach-In Refrigeration pairs durability and longevity with visual appeal. Featuring a bottom mounted compressor, the glass door refrigerators effectively keep product at exactly the right temperature while utilizing energy efficiency. The simple to use but precise digital controls allow for accurate and flexible use of the unit. For energy savings, durability, and visually appealing construction, Maxx Cold glass door refrigeration is sure to impress.



MCR-23GD



MCR-49GD

- Stainless steel exterior and interior ensures years of long life and maximum durability
- CFC-free polyurethane foam insulation
- (3) heavy-duty, adjustable, PE coated wire shelves per section
- Door locks and 4" diameter swivel casters come standard
- Utilizes environmentally friendly CFC-free R134A refrigerant
- Bottom mount compressor provides energy savings and ease of service
- Automatic defrost system
- Digitally controlled temperature system maintains optimum temperature and LED display is easily viewed from exterior
- Holding temperature: 28°F to 39°F
- Open door alert, beeps when door has been open for 5 minutes
- Large evaporator and condenser
- Automatic interior lighting
- Self contained system
- Available in 120V/60Hz, 220V/50Hz and 208-230V/60Hz



Model	Dim (W"xD"xH")	Capacity	Temp	Amps	Doors	Weight	Shelves
MCR-23GD	26.8 x 31 x 82.8 681 x 787 x 2103 mm	23 Cu Ft 651 L	28° to 39°F -2° to 4°C	6	1	310 lb 141 kg	3
MCR-49GD	54 x 31 x 82.8 1372 x 787 x 2103 mm	49 Cu Ft 1,387 L	28° to 39°F -2° to 4°C	7	2	465 lb 211 kg	6

MAXX COLD

X-series

ECONOMY REACH-IN REFRIGERATION

- White painted steel exterior and painted aluminum interior is rugged and an excellent value
- Easy to use digital controller for easy operation
- Automatic defrost for worry-free operation
- Single piece heavy duty handle and door for added durability
- 2.5" diameter swivel casters come standard
- Door locks standard
- Bottom-mounted compressor
- Door-frame heaters standard
- Doors are reversible
- Snap-in gaskets removable for cleaning or replacement
- Available in 120V/60Hz, 220V/50Hz and 208-230V/60Hz



Maxx Cold's 23 cubic foot, one-door reach-in refrigerator has 3 adjustable shelves, digital temperature control, and automatic defrost. The digital temperature display is easily viewed from the exterior or the cabinet. Maxx Cold refrigerators are designed to meet the requirements of the most discriminating customer.



MXX-23R



MXX-23F

Model	Dim (W"xD"xH")	Capacity	Temp	Amps	Doors	Weight	Shelves
MXX-23R Refrigerator	30.6 x 28.7 x 78 777 x 729 x 1981 mm	23 Cu Ft 651 L	33° to 41°F .5° to 5°C	6	1	232 lb 105 kg	3
MXX-23F Freezer	30.3 x 33 x 78 770 x 838 x 1981 mm	23 Cu Ft 651 L	-10° to 10° F -23° to -12° C	11	1	249 lb 113 kg	3

COUNTERTOP MERCHANDISERS



MAXX COLD

X-series

Maxx Cold X-Series Merchandisers are designed for durability and visual appeal to increase the visibility of your product to promote sales and enhance profits. Featuring a bottom mounted compressor, the glass door merchandisers effectively keep product at exactly the right temperature while utilizing energy efficiency. The simple to use but precise digital controls allow for accurate and flexible use of the unit. For energy savings, durability, and visually appealing construction, Maxx Cold X-Series Merchandisers are sure to be a hit.

- White painted steel exterior and ABS interior are rugged and attractive
- LED lighted interiors brightly illuminate the interior
- Hinged glass doors with door lock standard
- Fully adjustable feet for convenience
- Freezers feature manual defrost and refrigerators feature automatic defrost
- Exterior digital temperature display can be recessed in top of unit or raised for easy viewing
- Freezers feature triple pane glass doors and refrigerators feature double pane glass doors
- Available in 120V/60Hz, 220V/50Hz and 208-230V/60Hz



MXM1-2F



MXM1-2.5F



MXM1-3.5F



MXM1-4F



MXM1-2R



MXM1-2.5R



MXM1-3.5R



MXM1-4R



Model	Dim (W"xD"xH")	Capacity	Temp	Doors	Weight	Shelves
MXM1-2R Refrigerator	22.4 x 21 x 21 570 x 533 x 530 mm	2 Cu Ft 57 L	35° to 41°F 1.7° to 5°C	1	101.4 lb 46 kg	2
MXM1-2F Freezer	22.4 x 21 x 21 570 x 533 x 530 mm	2 Cu Ft 57 L	-3° to 0°F -19° to -17.8°C	1	101.4 lb 46 kg	2
MXM1-2.5R Refrigerator	22.4 x 22 x 29 570 x 550 x 735 mm	2.5 Cu Ft 71 L	35° to 41°F 1.7° to 5°C	1	115 lb 52 kg	2
MXM1-2.5F Freezer	22.4 x 22 x 29 570 x 550 x 735 mm	2.5 Cu Ft 71 L	-3° to 0°F -19° to -17.8°C	1	115 lb 52 kg	2
MXM1-3.5R Refrigerator	24.4 x 21.4 x 28 620 x 543 x 700 mm	3.5 Cu Ft 99 L	35° to 41°F 1.7° to 5°C	1	123.5 lb 56 kg	3
MXM1-3.5F Freezer	24.4 x 21.4 x 28 620 x 543 x 700 mm	3.5 Cu Ft 99 L	-3° to 0°F -19° to -17.8°C	1	123.5 lb 56 kg	3
MXM1-4R Refrigerator	24.4 x 22 x 35 620 x 560 x 895 mm	4 Cu Ft 113 L	35° to 41°F 1.7° to 5°C	1	143 lb 65 kg	3
MXM1-4F Freezer	24.4 x 22 x 35 620 x 560 x 895 mm	4 Cu Ft 113 L	-3° to 0°F -19° to -17.8°C	1	143 lb 65 kg	3



MAXX COLD

X-series

GLASS DOOR MERCHANDISERS

- Coated Steel Exterior and coated aluminum interior
- Electronic thermostat and digital LED temperature display for accurate control and easy reading
- CFC free refrigerant and foam
- Self-closing door
- Magnetic gasket
- Triple pane glass on freezer, double pane on refrigerators
- Powder coated cold rolled steel walls and cabinet, stainless steel floor
- LED lamps
- Available in 120V/60Hz, 220V/50Hz, and 208-230V/60Hz



Maxx Cold X-Series Merchandisers are designed for durability and visual appeal to increase the visibility of your product to promote sales and enhance profits. Featuring a bottom mounted compressor, the glass door merchandisers effectively keep product at exactly the right temperature while utilizing energy efficiency. The simple to use but precise digital controls allow for accurate and flexible use of the unit. For energy savings, durability, and visually appealing construction, Maxx Cold X-Series Merchandisers are sure to be a hit.



MXM1-12R



MXM1-16F



MXM1-23RB



MXM2-48R



MXM3-72RB

Model	Dim (W"xD"xH")	Capacity	Amps	Temp	Doors	Weight	Shelves
MXM1-12R Refrigerator	25 x 26 x 61.8 635 x 660 x 1570 mm	12 Cu Ft 340 L	6	33° to 41°F .5° to 5°C	1 Hinged	221 lb 100 kg	3
MXM1-12F Freezer	25 x 26 x 61.8 635 x 660 x 1570 mm	12 Cu Ft 340 L	11	-10° to 10°F -23° to -12°C	1 Hinged	225 lb 102 kg	3
MXM1-16R Refrigerator	25 x 26 x 74.8 635 x 660 x 1900 mm	16 Cu Ft 453 L	6	33° to 41°F .5° to 5°C	1 Hinged	243 lb 110 kg	3
MXM1-16F Freezer	25 x 26 x 74.8 635 x 660 x 1900 mm	16 Cu Ft 453 L	11	-10° to 10°F -23° to -12°C	1 Hinged	249 lb 113 kg	3
MXM1-23R Refrigerator White MXM1-23RB Refrigerator Black	26.8 x 31.9 x 79.5 681 x 810 x 2019 mm	23 Cu Ft 651 L	6	33° to 41°F .5° to 5°C	1 Hinged	282 lb 128 kg	4
MXM1-23F Freezer White MXM1-23FB Freezer Black	26.8 x 31.9 x 79.5 681 x 810 x 2019 mm	23 Cu Ft 651 L	11	-10° to 10°F -23° to -12°C	1 Hinged	302 lb 137 kg	4
MXM2-48R Refrigerator White MXM2-48RB Refrigerator Black	54 x 31.9 x 79.5 1372 x 810 x 2019 mm	48 Cu Ft 1359 L	7	33° to 41°F .5° to 5°C	2 Hinged	448 lb 203 kg	8
MXM2-48RS* Refrigerator	54 x 31.9 x 79.5 1372 x 810 x 2019 mm	48 Cu Ft 1359 L	7	33° to 41°F .5° to 5°C	2 *Slide	448 lb 203 kg	8
MXM2-48F Freezer White MXM2-48FB Freezer Black	54 x 31.9 x 79.5 1372 x 810 x 2019 mm	48 Cu Ft 1359 L	5	-10° to 10°F -23° to -12°C	2 Hinged	477 lb 216 kg	8
MXM3-72R Refrigerator White MXM3-72RB Refrigerator Black	81 x 31.9 x 79.5 2057 x 810 x 2019 mm	72 Cu Ft 2,039 L	10	33° to 41°F .5° to 5°C	3 Hinged	618 lb 280 kg	12
MXM3-72F Freezer White MXM3-72FB Freezer Black	81 x 31.9 x 79.5 2057 x 810 x 2019 mm	72 Cu Ft 2,039 L	8	-10° to 10°F -23° to -12°C	3 Hinged	706 lb 320 kg	12

UNDERCOUNTER REFRIGERATOR/FREEZER



MAXX COLD

Maxx Cold undercounter refrigerators and freezers make the most of available space and provide reliable service. All stainless steel construction allow these units to be easily cleaned. Like all Maxx Cold units, the undercounter refrigerators and freezers feature a digital thermostat with LED display for pinpoint accuracy.



MCR27U



MCR48U



MCR60U



MCR72U

- Stainless steel exterior and interior
- Urethane insulated walls and doors
- Recessed door handles
- Adjustable, heavy duty epoxy coated shelves, one per section/door
- Four 5" casters (2 locking, 2 non-locking)
- Easily serviced back mounted compressor
- Environmentally friendly refrigerants using R134A for refrigerator and freezer models MCF27U & R404A, for freezer models MCF48U, MCF60U, MCF72U
- Forced-air refrigeration
- Efficient cooling system (two or more fans)
- Self-contained
- Automatic defrost system
- Available in 120V/60Hz, 220V/50Hz and 208-230V/60Hz

*MCF72U only available in 120V/60Hz



Model	Dim (W"xD"xH")	Capacity	Temp	Weight	Doors	Amps
MCR27U Refrigerator	27.5 x 30 x 36 699 x 762 x 914 mm	7 Cu Ft 198 L	30.2° to 44.6°F -1° to 7°C	185 lb 84 kg	1	3.2
MCF27U Freezer	27.5 x 30 x 36 699 x 762 x 914 mm	7 Cu Ft 198 L	-11.2° to -4°F -24° to -18°C	194 lb 88 kg	1	5.2
MCR48U Refrigerator	48.5 x 30 x 36 1232 x 762 x 914 mm	13 Cu Ft 368 L	30.2° to 44.6°F -1° to 7°C	264 lb 120 kg	2	6
MCF48U Freezer	48.5 x 30 x 36 1232 x 762 x 914 mm	13 Cu Ft 368 L	-11.2° to -4°F -24° to -18°C	282 lb 128 kg	2	7.5
MCR60U Refrigerator	60.5 x 30 x 36 1537 x 762 x 914 mm	16 Cu Ft 453 L	30.2° to 44.6°F -1° to 7°C	308 lb 140 kg	2	6
MCF60U Freezer	60.5 x 30 x 36 1537 x 762 x 914 mm	16 Cu Ft 453 L	-11.2° to -4°F -24° to -18°C	326 lb 148 kg	2	7.5
MCR72U Refrigerator	72.5 x 30 x 36 1842 x 762 x 914 mm	20 Cu Ft 566 L	30.2° to 44.6°F -1° to 7°C	353 lb 160 kg	3	6.1
MCF72U Freezer	72.5 x 30 x 36 1842 x 762 x 914 mm	20 Cu Ft 566 L	-11.2° to -4°F -24° to -18°C	370 lb 168 kg	3	7.8

MAXX COLD

X-series

UNDERCOUNTER REFRIGERATOR/FREEZER

- Stainless steel exterior and painted aluminum interior
- Urethane insulated walls and doors
- Recessed door handles
- Adjustable, heavy duty epoxy coated shelves, one per section/door
- Four 5" casters (2 locking, 2 non-locking)
- Easily serviced back mounted compressor
- Environmentally friendly refrigerants using R134A for refrigerators and freezer models MXCF27U & R404A, for freezer models MXCF36U, MXCF48U, MXCF60U, MXCF72U
- Forced-air refrigeration
- Efficient cooling system (two or more fans)
- Self-contained
- Automatic defrost system
- Available in 120V/60Hz, 220V/50Hz and 208-230V/60Hz



Maxx Cold X-Series undercounter refrigerators and freezers make the most of available space and provide excellent service. The stainless steel exterior construction ensures years of long life and maximum durability. Maxx Cold X-Series provides unsurpassed quality at a value price.



MXCR27U



MXCR48U



MXCR60U

Model	Dim (W"xD"xH")	Capacity	Temp	Weight	Doors	Amps
MXCR27U Refrigerator	27.8 x 29.9 x 35.5 706 x 759 x 902 mm	6.5 Cu Ft 184 L	33° to 41°F .5° to 5°C	181 lb 82 kg	1	5
MXCF27U Freezer	27.8 x 29.9 x 35.5 706 x 759 x 902 mm	6.5 Cu Ft 184 L	-10° to 10°F -23° to -12°C	192 lb 87 kg	1	7
MXCR48U Refrigerator	48 x 29.9 x 35.5 1219 x 759 x 902 mm	12 Cu Ft 340 L	33° to 41°F .5° to 5°C	256 lb 116 kg	2	5
MXCF48U Freezer	48 x 29.9 x 35.5 1219 x 759 x 902 mm	12 Cu Ft 340 L	-10° to 10°F -23° to -12°C	278 lb 126 kg	2	9
MXCR60U Refrigerator	61 x 29.9 x 35.5 1549 x 759 x 902 mm	15.5 Cu Ft 439 L	33° to 41°F .5° to 5°C	305 lb 138 kg	2	5
MXCF60U Freezer	61 x 29.9 x 35.5 1549 x 759 x 902 mm	15.5 Cu Ft 439 L	-10° to 10°F -23° to -12°C	327 lb 148 kg	2	10

UNDERCOUNTER REFRIGERATOR/ FREEZER WITH DRAWERS



MAXX COLD

X-series

Maxx Cold X-Series undercounter freezers make the most of available space and provide excellent service. The stainless steel exterior construction ensures years of long life and maximum durability. Maxx Cold X-Series provides unsurpassed quality at a value price.

- Stainless Steel Exterior and painted aluminum Interior
- Urethane insulated walls and doors
- Recessed Door Handles
- Adjustable, heavy duty epoxy coated shelves, one per section/door
- Four casters (2 locking, 2 non-locking)
- Easily serviced back
- Mounted compressor
- Utilizes environmentally friendly refrigerants using R134A for refrigerators and R404A for freezers
- Forced-air refrigeration
- Efficient cooling system (two or more fans)
- Self-contained
- Automatic defrost system
- Available in 120V/60Hz, 220V/50Hz and 208-230V/60Hz



MXCR27U-D



MXCR48U-DR



MXCR48U-DL



MXCR48U-DLR



MXCR60U-DL



MXCR60U-DR



MXCR60U-DLR

Model	Dim (W"xD"xH")	Capacity	Temp	Weight	Doors / Drawers	Amps
MXCR27U-D Refrigerator	27.8 x 29.9 x 35.5 706 x 759 x 902 mm	6.5 Cu Ft 184 L	33° to 41°F .5° to 5°C	181 lb 82 kg	0 / 2	5
MXCF27U-D Freezer	27.8 x 29.9 x 35.5 706 x 759 x 902 mm	6.5 Cu Ft 184 L	-10° to 10°F -23° to -12°C	192 lb 87 kg	0 / 2	7
MXCR48U-DL Refrigerator	48 x 29.9 x 35.5 1219 x 759 x 902 mm	12 Cu Ft 340 L	33° to 41°F .5° to 5°C	256 lb 116 kg	1 / Drawers Left	5
MXCF48U-DR Freezer	48 x 29.9 x 35.5 1219 x 759 x 902 mm	12 Cu Ft 340 L	-10° to 10°F -23° to -12°C	278 lb 126 kg	1 / Drawers Right	9
MXCR48U-DLR Refrigerator	48 x 29.9 x 35.5 1219 x 759 x 902 mm	12 Cu Ft 340 L	33° to 41°F .5° to 5°C	256 lb 116 kg	0 / Drawers Left Right	5
MXCF48U-DLR Freezer	48 x 29.9 x 35.5 1219 x 759 x 902 mm	12 Cu Ft 340 L	-10° to 10°F -23° to -12°C	278 lb 126 kg	1 / Drawers Left Right	9
MXCR60U-DR Refrigerator	61 x 29.9 x 35.5 1549 x 759 x 902 mm	15.5 Cu Ft 439 L	33° to 41°F .5° to 5°C	305 lb 138 kg	1 / Drawers Right	5
MXCF60U-DL Freezer	61 x 29.9 x 35.5 1549 x 759 x 902 mm	15.5 Cu Ft 439 L	-10° to 10°F -23° to -12°C	327 lb 148 kg	1 / Drawers Left	10
MXCF60U-DR Freezer	61 x 29.9 x 35.5 1549 x 759 x 902 mm	15.5 Cu Ft 439 L	-10° to 10°F -23° to -12°C	327 lb 148 kg	1 / Drawers Right	10
MXCR60U-DLR Refrigerator	61 x 29.9 x 35.5 1549 x 759 x 902 mm	15.5 Cu Ft 439 L	33° to 41°F .5° to 5°C	305 lb 138 kg	1 / Drawers Left Right	5
MXCF60U-DLR Freezer	61 x 29.9 x 35.5 1549 x 759 x 902 mm	15.5 Cu Ft 439 L	-10° to 10°F -23° to -12°C	327 lb 148 kg	1 / Drawers Left Right	10



MAXX COLD

SANDWICH STATIONS

- Stainless steel interior & exterior
- CFC Free Polyurethane insulated walls and doors
- Standard recessed door handles
- Adjustable, heavy-duty wire shelves, each unit comes with one per section/door
- Four 5" casters (2 locking, 2 non-locking)
- Stainless steel, stain resistant louver distributes air evenly through the unit
- Door width: 23 7/8"
- Uses R134A refrigerant
- Forced-air refrigeration
- Efficient cooling system (two fans)
- Self-contained
- Available in 120V/60Hz, 220V/50Hz and 208-230V/60Hz



Maxx Cold Sandwich Stations are designed for performance and durability with accessibility to allow for quick and easy preparation of sandwiches, salads and more. A high quality stainless steel exterior and interior allows for easy cleaning and a heavy duty stainless steel insulated hood keeps products cool and fresh. A digital thermostat with LED display completes an all-around unbeatable product.



MCR27S



MCR48S



MCR60S



MCR72S

Model	Dim (W"xD"xH")	Capacity	Temp	Amps	Doors	Weight	Pans 1/6	Shelves
MCR27S	27.5 x 30 x 42.5 699 x 762 x 1080 mm	6.8 Cu Ft 193 L	30° to 45°F -1° to 7°C	3.4	1	198 lb 90 kg	8	1
MCR48S	48.3 x 30 x 42.5 1227 x 762 x 1080 mm	12.7 Cu Ft 361 L	30° to 45°F -1° to 7°C	6	2	284 lb 129 kg	12	2
MCR60S	60 x 30 x 42.5 1533 x 762 x 1080 mm	16 Cu Ft 459 L	30° to 45°F -1° to 7°C	6	2	316 lb 143 kg	16	2
MCR72S	72.4 x 30 x 42.5 1839 x 762 x 1080 mm	19.6 Cu Ft 556 L	30° to 45°F -1° to 7°C	6.1	3	348 lb 158 kg	18	3

SANDWICH STATIONS



MAXX COLD

X-series

Maxx Cold X-Series Sandwich Stations provide the perfect blend of durability and accessibility to allow for quick and easy preparation of sandwiches, salads, and more at a value price. A high quality stainless steel exterior allows for easy cleaning and a heavy duty stainless steel insulated hood keeps products cool and fresh.



MXCR29S



MXCR48S



MXCR60S

- Stainless steel exterior and coated aluminum interior
- CFC Free Polyurethane insulated walls and doors
- Standard recessed door handles
- Adjustable, heavy-duty wire shelves, each unit comes with one per section/door
- Four casters (2 locking, 2 non-locking)
- Uses R134A refrigerant
- Forced-air refrigeration
- Efficient self contained cooling system
- Available in 120V/60Hz, 220V/50Hz and 208-230V/60Hz



Model	Dim (W"xD"xH")	Capacity	Temp	Doors	Weight	Amps	Pans 1/6	Shelves
MXCR29S	28.7 x 29.9 x 43.2 729 x 759 x 1097mm	7 Cu Ft 198 L	33° to 41°F .5° to 5°C	1	210 lb 95 kg	5	8	1
MXCR48S	48 x 29.9 x 43.2 1225 x 759 x 1097mm	12 Cu Ft 340 L	33° to 41°F .5° to 5°C	2	305 lb 138 kg	7	12	2
MXCR60S	61 x 29.9 x 43.2 1555 x 759 x 1097mm	15.5 Cu Ft 453 L	33° to 41°F .5° to 5°C	2	351 lb 189 kg	7.5	16	2



MAXX COLD

X-series

SANDWICH UNITS WITH DRAWERS

- Stainless steel exterior and coated aluminum interior
- CFC Free Polyurethane insulated walls and doors
- Standard recessed door handles
- Adjustable, heavy-duty wire shelves, each unit comes with one per section/door
- Four casters (2 locking, 2 non-locking)
- Uses R134A refrigerant
- Forced-air refrigeration
- Efficient self contained cooling system
- Available in 120V/60Hz, 220V/50Hz and 208-230V/60Hz

Maxx Cold X-Series Sandwich Stations provide the perfect blend of durability and accessibility to allow for quick and easy preparation of sandwiches, salads, and more at a value price. A high quality stainless steel exterior allows for easy cleaning and a heavy duty stainless steel insulated hood keeps products cool and fresh.



MXCR29S-D



MXCR48S-DR



MXCR60S-DLR



Model	Dim (W"xD"xH")	Capacity	Temp	Doors/ Drawers	Weight	Amps	Pans (1/6)
MXCR29S-D	28.7 x 30 x 43.2 729 x 760 x 1097mm	7 Cu Ft 198 L	33° to 41°F .5° to 5°C	0 / 2	210 lb 95 kg	5	8
MXCR48S-DR	48 x 30 x 43.2 1225 x 760 x 1097mm	12 Cu Ft 340 L	33° to 41°F .5° to 5°C	2 Drawers Right	305 lb 138 kg	7	12
MXCR48S-DL	48 x 30 x 43.2 1225 x 760 x 1097mm	12 Cu Ft 340 L	33° to 41°F .5° to 5°C	1 Drawers Left	305 lb 138 kg	7	12
MXCR48S-DLR	48 x 30 x 43.2 1225 x 760 x 1097mm	12 Cu Ft 340 L	33° to 41°F .5° to 5°C	0 Drawers Left Right	305 lb 138 kg	7	12
MXCR60S-DR	61 x 30 x 43.2 1555 x 760 x 1097mm	15.5 Cu Ft 453 L	33° to 41°F .5° to 5°C	1 Drawers Right	351 lb 159 kg	7.5	16
MXCR60S-DL	61 x 30 x 43.2 1555 x 760 x 1097mm	15.5 Cu Ft 453 L	33° to 41°F .5° to 5°C	1 Drawers Left	351 lb 159 kg	7.5	16
MXCR60S-DLR	61 x 30 x 43.2 1555 x 760 x 1097mm	15.5 Cu Ft 453 L	33° to 41°F .5° to 5°C	0 Drawers Left Right	351 lb 159 kg	7.5	16



Maxx Cold Megatops offer additional pan space for increased capacity and flexibility. A complete stainless steel interior and exterior ensures durability and years of reliable service.



MCR27M



MCR48M



MCR60M



MCR72M

- Stainless steel interior & exterior
- CFC Free Polyurethane insulated walls and doors
- Standard recessed door handles
- Adjustable, heavy-duty wire shelves, each unit comes with one per section/door
- Four 5" casters (2 locking, 2 non-locking)
- Stainless steel, stain resistant louver distributes air evenly through the unit
- Door width: 23.875"
- Uses R134A refrigerant
- Forced-air refrigeration
- Efficient cooling system (two fans)
- Self-contained
- Available in 120V/60Hz, 220V/50Hz and 208-230V/60Hz



Model	Dim (W"xD"xH")	Capacity	Temp	Pans 1/6	Doors	Amps	Weight
MCR27M	27.5 x 33.1 x 44.1 699 x 841 x 1120mm	6.8 Cu Ft 193 L	30° to 45°F -1° to 7°C	12	1	3.4	205 lb 93 kg
MCR48M	48.2 x 35.3 x 44.1 1224 x 897 x 1120mm	12.7 Cu Ft 361 L	30° to 45°F -1° to 7°C	18	2	6	291 lb 132 kg
MCR60M	60.4 x 35.3 x 44.1 1534 x 897 x 1120mm	16 Cu Ft 459 L	30° to 45°F -1° to 7°C	24	2	6	328 lb 149 kg
MCR72M	72.4 x 33.1 x 44.1 1839 x 841 x 1120mm	19.6 Cu Ft 556 L	30° to 45°F -1° to 7°C	30	3	6.1	361 lb 164 kg

MAXX COLD

X-series

MEGATOPS SANDWICH UNITS

- Stainless steel exterior and coated aluminum interior
- CFC Free Polyurethane insulated walls and doors
- Standard recessed door handles
- Adjustable, heavy-duty wire shelves, each unit comes with one per section/door
- Four casters (2 locking, 2 non-locking)
- Uses R134A refrigerant
- Forced-air refrigeration
- Efficient self contained cooling system
- Available in 120V/60Hz, 220V/50Hz and 208-230V/60Hz



Maxx Cold X-Series Megatops Sandwich Units offer additional pan space for increased capacity and flexibility. A stainless steel exterior ensures durability and years of reliable service at a great value.



MXCR29M



MXCR48M



MXCR60M

Model	Dim (W"xD"xH")	Capacity	Temp	Doors	Weight	Amps	Pans 1/6
MXCR29M	28.7 x 29.9 x 43.2 729 x 759 x 1097mm	7 Cu Ft 198 L	33° to 41°F .5° to 5°C	1	210 lb 95.2 kg	5	12
MXCR48M	48.2 x 29.9 x 43.2 1219 x 759 x 1097mm	12 Cu Ft 340 L	33° to 41°F .5° to 5°C	2	305 lb 138 kg	7	18
MXCR60M	61 x 29.9 x 43.2 1555 x 759 x 1097mm	15.5 Cu Ft 453 L	33° to 41°F .5° to 5°C	2	351 lb 159 kg	7.5	24

MEGATOPS SANDWICH UNITS WITH DRAWERS



MAXX COLD

X-series

Maxx Cold X-Series Megatops Sandwich Units with Drawers offer additional pan space for increased capacity and flexibility. A stainless steel exterior ensures durability and years of reliable service at a great value.



MXCR29M-D



MXCR48M-DR



MXCR48M-DL



MXCR48M-DLR



MXCR60M-DR



MXCR60M-DL



MXCR60M-DLR

- Stainless steel exterior and coated aluminum interior
- CFC Free Polyurethane insulated walls and doors
- Standard recessed door handles
- Adjustable, heavy-duty wire shelves, each unit comes with one per section/door
- Four casters (2 locking, 2 non-locking)
- Uses R134A refrigerant
- Forced-air refrigeration
- Efficient self contained cooling system
- Available in 120V/60Hz, 220V/50Hz and 208-230V/60Hz



Model	Dim (W"xD"xH")	Capacity	Temp	Doors/ Drawers	Weight	Amps	Pans 1/6
MXCR29M-D	28.7 x 30 x 43.2 729 x 762 x 1097mm	7 Cu Ft 198 L	33° to 41°F .5° to 5°C	0 / 2	210 lb 99 kg	5	12
MXCR48M-DR	48 x 30 x 43.2 1225 x 762 x 1097mm	12 Cu Ft 340 L	-5° to 5°F -20° to -15°C	1 Drawers Right	305 lb 152 kg	7	18
MXCR48M-DLR	48 x 30 x 43.2 1225 x 762 x 1097mm	12 Cu Ft 340 L	-5° to 5°F -20° to -15°C	0 Drawers Left Right	305 lb 142 kg	7	18
MXCR60M-DR	61 x 30 x 43.2 1555 x 762 x 1097mm	15.5 Cu Ft 453 L	33° to 41°F .5° to 5°C	1 Drawers Right	362 lb 183 kg	7.5	24
MXCR60M-DL	61 x 30 x 43.2 1555 x 762 x 1097mm	15.5 Cu Ft 453 L	33° to 41°F .5° to 5°C	1 Drawers Left	362 lb 183 kg	7.5	24
MXCR60M-DLR	61 x 30 x 43.2 1555 x 762 x 1097mm	15.5 Cu Ft 453 L	33° to 41°F .5° to 5°C	0 Drawers Left Right	362 lb 183 kg	7.5	24



MAXX COLD

PIZZA PREPARATION TABLES

- Stainless steel exterior and coated aluminum interior
- CFC Free Polyurethane insulated walls and doors
- Standard recessed door handles
- Adjustable, heavy-duty wire shelves, each unit comes with one per section/door
- Four casters (2 locking, 2 non-locking)
- Uses R134A refrigerant
- Forced-air refrigeration
- Efficient cooling system
- Self-contained
- Available in 120V/60Hz, 220V/50Hz and 208-230V/60Hz



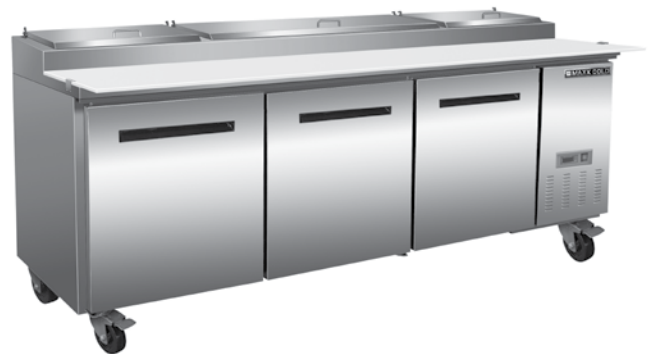
Maxx Cold X-Series Pizza Preparation Tables provide users with a reliable and efficient way to quickly prepare pizzas and are available at an unbeatable value. A stainless steel exterior ensures durability and years of reliable service.



MXCPP50



MXCPP70



MXCPP92

Model	Dim (W"xD"xH")	Capacity	Temp	Doors	Weight	Amps	Pans 1/6
MXCPP50	47.2 x 32.3 x 41.7 1199 x 820 x 1059mm	12 Cu Ft 340 L	33° to 41°F .5° to 5°C	1	309 lb 140 kg	7	6
MXCPP70	70.7 x 32.3 x 41.7 1796 x 820 x 1059mm	22 Cu Ft 623 L	33° to 41°F .5° to 5°C	2	408 lb 185 kg	7.5	9
MXCPP92	94.1 x 32.3 x 41.7 2390 x 820 x 1059mm	32 Cu Ft 906 L	33° to 41°F .5° to 5°C	3	534 lb 242 kg	7.5	12

PIZZA PREPARATION TABLES WITH DRAWERS



MAXX COLD

X-series

Maxx Cold X-Series Pizza Preparation Tables provide users with a reliable and efficient way to quickly prepare pizzas and are available at an unbeatable value. A stainless steel exterior ensures durability and years of reliable service.

- Stainless steel exterior and coated aluminum interior
- CFC Free Polyurethane insulated walls and doors
- Standard recessed door handles
- Adjustable, heavy-duty wire shelves, each unit comes with one per section/door
- Four casters (2 locking, 2 non-locking)
- Uses R134A refrigerant
- Forced-air refrigeration
- Efficient cooling system
- Self-contained
- Available in 120V/60Hz, 220V/50Hz and 208-230V/60Hz



MXCPP50-D



MXCPP70-DR



MXCPP70-DL



MXCPP70-DLR



MXCPP92-DR



MXCPP92-DL



MXCPP92-DLR



MXCPP92-DLM



MXCPP92-DM



MXCPP92-DMR



MXCPP92-DLM



MXCPP92-DLMR

Model	Dim (W"xD"xH")	Capacity	Temp	Doors/ Drawers	Weight	Amps	Pans 1/6
MXCPP50-D	47.2 x 32.3 x 41.7 1199 x 820 x 1059mm	12 Cu Ft 340 L	33° to 41°F .5° to 5°C	0 / 2	309 lb 140 kg	7	6
MXCPP70-DR	71 x 33 x 42 1798 x 820 x 1059mm	22 Cu Ft 623 L	33° to 41°F .5° to 5°C	1 / Drawers Right	408 lb 185 kg	7.5	9
MXCPP70-DL	71 x 32.3 x 41.7 1798 x 820 x 1059mm	22 Cu Ft 623 L	33° to 41°F .5° to 5°C	1 / Drawers Left	408 lb 185 kg	7.5	9
MXCPP70-DLR	71 x 32.3 x 41.7 1798 x 820 x 1059mm	22 Cu Ft 623 L	33° to 41°F .5° to 5°C	0 / Drawers Left Right	408 lb 185 kg	7.5	9
MXCPP92-DR	94 x 32.3 x 41.7 2393 x 820 x 1059mm	32 Cu Ft 906 L	33° to 41°F .5° to 5°C	2 / Drawers Right	534 lb 242 kg	7.5	12
MXCPP92-DL	94 x 32.3 x 41.7 2393 x 820 x 1059mm	32 Cu Ft 906 L	33° to 41°F .5° to 5°C	2 / Drawers Left	534 lb 242 kg	7.5	12
MXCPP92-DLR	94 x 32.3 x 41.7 2393 x 820 x 1059mm	32 Cu Ft 906 L	33° to 41°F .5° to 5°C	1 / Drawers Left Right	534 lb 242 kg	7.5	12
MXCPP92-DM	94 x 32.3 x 41.7 2393 x 820 x 1059mm	32 Cu Ft 906 L	33° to 41°F .5° to 5°C	2 / Drawers Middle	534 lb 242 kg	7.5	12
MXCPP92-DMR	94 x 32.3 x 41.7 2393 x 820 x 1059mm	32 Cu Ft 906 L	33° to 41°F .5° to 5°C	1 / Drawers Middle Right	534 lb 242 kg	7.5	12
MXCPP92-DLM	94 x 32.3 x 41.7 2393 x 820 x 1059mm	32 Cu Ft 906 L	33° to 41°F .5° to 5°C	1 / Drawers Left Middle	534 lb 242 kg	7.5	12
MXCPP92-DLMR	94.1 x 32.3 x 41.7 2390 x 820 x 1059mm	32 Cu Ft 906 L	33° to 41°F .5° to 5°C	0 / Drawers Left, Middle, Right	534 lb 242 kg	7.5	12



MAXX COLD

CHEF BASES

- Urethane insulated walls and doors
- Recessed drawer handles
- 5" casters standard
- Utilizes environmentally friendly refrigerants using R134A for refrigerators
- Forced-air refrigeration
- Efficient cooling system
- Self-contained
- Automatic defrost system
- Available in 120V/60Hz, 220V/50Hz and 208-230V/60Hz



Maxx Cold Chef Bases are designed for performance and durability while providing ample space for storage. Stainless steel exterior and interior construction ensures years of reliable service.



MCCB54



MCCB72



MCCB84



MCCB96

Model	Dim (W"xD"xH")	Capacity	Amps	Weight	Pans (Full Size)
MCCB54	52.8 x 30.5 x 25.5 1341 x 775 x 648mm	9.8 Cu Ft 278 L	3.3	558 lb 253 kg	6
MCCB72	70.5 x 30.5 x 25.5 1791 x 775 x 648mm	14.3 Cu Ft 396 L	3.3	893 lb 405 kg	8
MCCB84	83.3 x 30.5 x 25.5 2116 x 775 x 648mm	17.2 Cu Ft 481 L	6	849 lb 385 kg	10
MCCB96	96.1 x 30.5 x 25.5 2441 x 775 x 648mm	21.4 Cu Ft 595 L	6	831 lb 377 kg	12

KEG COOLERS WITH TOWERS



MAXX COLD

Maxx Cold's keg coolers with direct draw beer towers feature a sanitary stainless steel top and black coated steel exterior for durability and easy cleaning. Forced air cooling distributes air evenly to keep contents of the cabinet cooled at the optimum temperature. Standard 3-inch polished stainless steel draft tower dispensers are attached to the top center of the stainless steel counter and cooled by continuous cold air circulation through the channel air distributor system. This reduces foam when dispensing beer. Easy-to-access refrigerated storage area for glasses and mugs. Refrigeration temperature ranges from 32°F to 40°F (0°C to 4.4°C).

- Painted black coated steel exterior.
- Galvanized steel interior.
- Stainless steel interior floor.
- Stainless steel top.
- 3-inch polished stainless steel draft tower dispenser.
- Slide out condensing unit for easy cleaning and servicing.
- Epoxy coated evaporator coils resist corrosion.
- Standard 4" casters.
- 1 door has 2 shelves,
2 door has 4 shelves,
3 door has 6 shelves.
- Available in 115V/60HZ, 220V-230V/60HZ



MCBD24-1B



MCBD60-2B



MCBD70-2B



MCBD90-3B

Model	Dim (W"xD"xH")	Capacity	Temp	Doors	Weight	Amps
MCBD24-1B	23.5 x 31.2 x 39.2 597x792x996mm	7 Cu Ft 198 L	32° to 40°F 0° to 4°C	1 Solid	187 lb 85 kg	3.3
MCBD60-2B	59.1 x 27.1 x 37 1501x689x940mm	19 Cu Ft 538 L	32° to 40°F 0° to 4°C	2 Solid	276 lb 125 kg	6.3
MCBD70-2B	69.1 x 27.1 x 37 1755x689x940mm	23 Cu Ft 651 L	32° to 40°F 0° to 4°C	2 Solid	298 lb 135 kg	6.3
MCBD90-3B	90.5 x 27.1 x 37 2299x689x940mm	31.5 Cu Ft 892 L	32° to 40°F 0° to 4°C	3 Solid	441 lb 200 kg	6.3



MAXX COLD

BOTTLE COOLERS

- Painted black steel exterior and painted aluminum interior
- Interior LED light for illuminating interior in dark environments
- Reinforced heavy duty crossbar can support heavy loads without breaking
- External built-in bottle opener and bottle cap catcher
- Rounded internal edges for easy cleaning
- Forced air cooling for high efficiency
- Adjustable internal dividers included
- Adjustable feet
- Available in 115V/60Hz, 220V/50Hz and 208-230V/60Hz



Maxx Cold Bottle Coolers are an excellent option for keeping bottled beverages cold and accessible. The spacious aluminum interior houses a LED light to illuminate the inside, which is especially convenient in dark operating environments. A built-in bottle opener and bottle cap catcher make this unit fully functional in high volume operations, while a reinforced heavy duty crossbar allows it to withstand the harshest of conditions.



MXCR50B



MXCR65B

Model	Dim (W"xD"xH")	Capacity	Temp	Watts	Amps	Doors/ Dividers
MXCR50B	49.4 x 27 x 35 1255 x 686 x 889mm	13.5 Cu Ft 396 L	33° to 41°F -5° to 5°C	805	7.0	2 / 2
MXCR65B	64.3 x 27 x 35 1633 x 686 x 889mm	17.2 Cu Ft 481 L	33° to 41°F -5° to 5°C	805	7.0	2 / 3

BACK BAR COOLERS



MAXX COLD

Maxx Cold's back bar coolers with stainless steel top are designed to keep cold beverages at the optimum temperature for serving customers. The entire cabinet is foamed in place with low ODP polyurethane insulation.

The galvanized steel interior with stainless steel floors and a wall thickness of 1.5" guarantees years of cold refrigeration. The self-contained, slide out unit uses R-134A refrigerant and comes equipped with coated evaporator coils and a condensate evaporator. Temperature ranges from 32°F to 40°F (0°C to 4.4°C).



MCBB24-1B



MCBB24-1BG



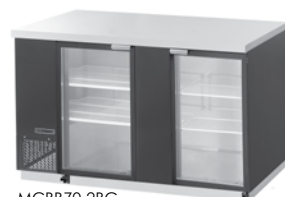
MCBB60-2B



MCBB60-2BG



MCBB70-2B



MCBB70-2BG



MCBB90-3B



MCBB90-3BG

- Painted black coated steel exterior
- Galvanized steel interior
- Stainless steel interior floor
- Stainless steel top
- 3-inch polished stainless steel draft tower dispenser
- Slide out condensing unit for easy cleaning and servicing
- Epoxy coated evaporator coils resist corrosion
- Standard 4" casters
- 1 door has 2 shelves
- 2 door has 4 shelves
- 3 door has 6 shelves
- Available in 115V/60HZ, 220V-230V/60HZ
- B models: Solid doors with locks.
- BG models: Glass doors with locks.



Model	Dim (W"xD"xH")	Capacity	Temp	Doors	Weight	Amps
MCBB24-1B	23.5 x 31.2 x 39.2 597 x 792.5x996mm	7 Cu Ft 198 L	32° to 40°F 0° to 4°C	1 Solid	187 lb 85 kg	3.34
MCBB24-1BG	23.5 x 32.6 x 39.2 597x828.5x996mm	7 Cu Ft 198 L	32° to 40°F 0° to 4°C	1 Glass	198 lb 90 kg	3.34
MCBB60-2B	59.1 x 27.1 x 37 1501x688x940mm	19 Cu Ft 538 L	32° to 40°F 0° to 4°C	2 Solid	276 lb 125 kg	6.34
MCBB60-2BG	59.1 x 28.3 x 37 1501x719x940mm	19 Cu Ft 538 L	32° to 40°F 0° to 4°C	2 Glass	298 lb 135 kg	6.34
MCBB70-2B	69.1 x 27.1 x 37 1755x688x940mm	23 Cu Ft 651 L	32° to 40°F 0° to 4°C	2 Solid	298 lb 135 kg	6.34
MCBB70-2BG	69.1 x 28.3 x 37 1755x719x940mm	23 Cu Ft 651 L	32° to 40°F 0° to 4°C	2 Glass	320 lb 145 kg	6.34
MCBB90-3B	90.5 x 27.1 x 37 2299x688x940mm	31.5 Cu Ft 892 L	32° to 40°F 0° to 4°C	3 Solid	441 lb 200 kg	6.34
MCBB90-3BG	90.5 x 28.3 x 37 2299x719x940mm	31.5 Cu Ft 892 L	32° to 40°F 0° to 4°C	3 Glass	474 lb 215 kg	6.34



COMPACT INDOOR/OUTDOOR REFRIGERATION

- Stainless Steel exterior
- Reversible stainless steel doors
- Designed for household and commercial use
- Air-cooled condenser

Maxx Ice Indoor/Outdoor Refrigeration is designed to fulfil your outdoor entertainment area needs and dreams. Perfect for any entertainment space, these units can be freestanding or built-in and are designed to weather the elements when necessary while providing years of enjoyment with easy maintenance.



MCR3U
Indoor Refrigerator



MCR3U-O
Outdoor Refrigerator



MCWC28
Indoor Wine Cooler



MCWC28-O
Outdoor Wine Cooler

Model	Dim (W"xD"xH")	Temp	Watts	Doors	Weight	Shelves
MCR3U	14.5 x 23 x 33.5 368x584x851mm	35° to 40°F	400	1	77 lb 35 kg	3/1 Basket
MCWC28	14.5 x 23 x 33.5 368x584x851mm	45° to 55°F	460	1	76 lb 34 kg	6
MCR3U-O	14.5 x 23 x 33.5 368x584x851mm	35° to 40°F	460	1	67 lb 31 kg	3/1 Basket
MCWC28-O	15 x 23 x 34 368x584x838mm	35° to 50°F	460	1	76 lb 34 kg	6

ICE MACHINES

MAXX ICE

There is a Maxx Ice machine designed to fit your every need and any space requirement. With machines built to produce from 50 lbs to 1000 lbs per day, all units up to 250 lbs are self contained and machines of 450 lbs and over are modular with matching bins. Modular units can also be stacked to increase the daily production levels. What ever your ice requirement is, Maxx Ice can meet that need efficiently and effectively



MIM50



MIM50-O



MIM75

MIM50 -Indoor

MIM50-O - Outdoor

50 lb Ice Maker – Self Contained

- Up to 50 lb (23 kg) daily output capability *
- Air-cooled condenser
- Automatic overflow prevention
- Designed for energy and water savings
- Gravity drain
- No condensation and great insulation
- For freestanding or built-in applications
- Storage capacity: 25 lb (11 kg)
- Ice Type: Slab Cube
- NSF and UL-listed for commercial use
- Available in 120V/60Hz and 220V/50Hz

MIM75

75 lb Ice Maker – Self Contained

- Up to 75 lb (34 kg) daily output capability *
- Air-cooled condenser
- Automatic overflow prevention
- Cleaning cycle
- Gravity drain
- For freestanding or built-in applications
- Stainless Steel construction
- Storage capacity: 25 lb (11 kg)
- Ice Type: Individual Bullet
- NSF and UL-listed for commercial use
- Available in 120V/60Hz and 220V/50Hz



Model	Dim (W"xD"xH")	Ice Type	Capacity	Amps	Ice Size (W"xD"xH")	Weight	Water Consumption (gal/100lb ice)
MIM50	14 x 24 x 34 356x610x864mm	Slab Cube	50 lb / 23 kg PER DAY	4.8	.75 x .75 x 1 19x19x25.5mm	106 lb 23 kg	15
MIM50-O	15 x 23 x 34 381x584x864mm	Slab Cube	50 lb / 23 kg PER DAY	4.8	.75 x .75 x 1 19x19x25.5mm	84 lb 38 kg	20
MIM75	17 x 22 x 34 432x559x864mm	Individual Bullet	75 lb / 34 kg PER DAY	11.2	1 x 1.25 x 1 24.4x32x24.4mm	93 lb 42 kg	20

* Water consumption is based on 90°F ambient air temperature and 70°F incoming water temperature



MIM100

100 lb Ice Maker – Self Contained

- Up to 100 lb (47 kg) daily output capability *
- Air-cooled condenser
- Automatic overfill prevention
- Cleaning cycle
- Gravity drain
- NSF and UL-listed for commercial use
- Available in 120V/60Hz and 220V/50Hz
- Storage Capacity: 35 lb (15.8 kg)

MIM130

130 lb Ice Maker – Self Contained

- Up to 130 lb (59 kg) daily output capability *
- Air-cooled condenser
- Automatic overfill prevention
- Cleaning cycle
- Gravity drain
- NSF and UL-listed for commercial use
- Available in 120V/60Hz and 220V/50Hz
- Storage Capacity: 35 lb (15.8 kg)

MIM250

250 lb Ice Maker – Self Contained

- Up to 250 lb (113 kg) daily output capacity *
- Stainless steel construction
- Adjustable legs from 4.7" to 7" (119mm to 178mm)
- Available in 120V/60Hz and 220V/50Hz
- Storage Capacity: 75 lb (34 kg)



Incorporating innovation into every unit, Maxx Ice models feature stainless steel construction, automatic overfill prevention, 5 models for built-in or free standing application, plus 3 modular models. For maximum value, choose Maxx Ice!



MIM100



MIM130



MIM250

Model	Dim (W"xD"xH")	Ice Type	Capacity	Amps	Ice Size (W"xD"xH")	Weight	Water Consumption (gal/100lb ice)
MIM100	22 x 21 x 33 561x541x826mm	Individual Cube	100 lb/47 kg PER DAY	11.7	1.25 x 1.25 x 1.25 32x32x32mm	106 lb 48 kg	20
MIM130	22 x 21 x 33 561x541x826mm	Individual Bullet	130 lb/59 kg PER DAY	11.8	1 x 1.25 x 1 24.4x32x24.4mm	110 lb 50 kg	23
MIM250	24 x 24 x 39 610x610x991mm	Slab Cube	250 lb/113 kg PER DAY	12	1 x 1 x .75 25x25x19mm	144 lb 65 kg	23

Maxx Ice currently offers cubers ranging in size from 50 lb self-contained units to 1000 lb modular units. They are backed by a well-trained service network and are built for efficiency, durability and ease of service.



BIN230



BIN400



BIN650
Required:
B650 Adapter - 302138601

BIN230/400/650/950

- Stainless steel exterior and poly liner
- Stainless steel door
- 6" (152mm) adjustable stainless steel legs
- Easy to clean and maintain
- CFC Free Foamed-in-place insulation
- NSF-approved
- Storage Capacity: 430 lb (195 kg)



BIN950
Required: B950 Adapter - 302138701

Model	Dim (W"xD"xH")	Capacity	Weight	Water Consumption (gal/100lb ice)
BIN230	30.25 x 31.5 x 25 768x800x635mm (with 6" legs)	230 lb/104 kg	112 lb 51 kg	N/A
BIN400	30.25 x 34 x 37 768x864x940mm (with 6" legs)	400 lb/181 kg	148 lb 67 kg	N/A
BIN650	44 x 31.5 x 40 1118x801x1041 (with 6" legs)	660 lb/299 kg	160 lbs 73 kg	N/A
BIN950	48 x 31.5 x 50 1220x801x1270 (with 6" legs)	950 lb/431 kg	210 lbs 95 kg	N/A

* Water consumption is based on 90°F ambient air temperature and 70°F incoming water temperature



MIM452

450 lb Ice Maker – Modular

- Up to 450 lb (204 kg) daily output capacity *
- Stainless steel construction
- Air-cooled condenser
- Electronic controls
- Recessed handles allow for easy handling
- Runs on standard household electrical current
- Easy to operate and maintain
- Uses CFC-free R404A refrigerant
- Ice Type: Slab Cube
- NSF and UL-listed for commercial use
- Available in 120V/60Hz and 220V/50Hz

MIM600

600 lb Ice Maker – Modular

- Up to 600 lb (272 kg) daily output capacity *
- Stainless steel construction
- Air-cooled condenser
- Electronic controls
- Electrical: 208-230V/60Hz
- Easy to operate and maintain
- Uses CFC-free R404A refrigerant
- Ice Type: Slab Cube
- NSF and UL-listed for commercial use
- Available in 220V/50Hz

MIM1000

1000 lb Ice Maker – Modular

- Up to 1000 lb (500 kg) daily output capacity *
- Stainless steel construction
- Air-cooled condenser
- Electronic controls
- Electrical: 208-230V/60Hz
- Easy to operate and maintain
- Uses CFC-free R404A refrigerant
- Ice Type: Slab Cube
- NSF and UL-listed for commercial use
- Available in 220V/50Hz



MIM452
(Shown with optional bin)

Model	Dim (W"xD"xH")	Ice Type	Capacity	Amps	Ice Size (W"xD"xH")	Weight	Water Consumption (gal/100lb ice)
MIM452	30 x 24 x 21 762x610x533mm	Slab Cube	450 lb/204 kg PER DAY	15.3	.75 x 1 x .75 19x25x19mm	130 lb 59 kg	16
MIM600	30 x 24 x 21 762x610x533mm	Slab Cube	600 lb/272 kg PER DAY	18.9	.875 x 1 x .75 22x25x19mm	163 lb 74 kg	16
MIM1000	30 x 24 x 34 762x610x860mm	Slab Cube	1000 lb/454 kg PER DAY	22.4	.875 x 1 x .75 22x25x19mm	144 lb 65 kg	16

* Water consumption is based on 90°F ambient air temperature and 70°F incoming water temperature

Guide for Sizing Ice Making Equipment*

RESTAURANTS

- 2 LB PER CUSTOMER
- 5 LB PER SEAT

COCKTAIL LOUNGE

- 3 LB PER CUSTOMER

SALAD BARS AND ICED DISPLAYS

- 10 – 12 LB PER SQUARE FOOT (4" DEPTH)

HEALTH CARE

- 6 LB PER BED
- 2 LB PER EMPLOYEE

HOTEL AND LODGING

- 5 LB PER ROOM

CONVENIENCE STORES

- 5 OZ. PER 12 OZ. DRINK
- 8 OZ. PER 20 OZ. DRINK
- 12 OZ. PER 32 OZ. DRINK
- ADD 50% IF USING COLD PLATE

* Sizing guide reflects usage for 24 hours

Limited Warranty Coverage

MAXXIMUM, a division of The Legacy Companies, warrants to the original purchaser its products to be free from defects in materials and workmanship for the following time periods: **(conditions and restrictions apply)*

Maxx Cold Standard Warranty

Three (3) years Parts
Three (3) years on-site Labor
Additional Two (2) year Compressor Warranty (Parts Only)
X Series Standard Warranty
One (1) years Parts
One (1) years on-site Labor
Additional Four (4) year Compressor Warranty (Parts Only)

Maxx Ice Standard Warranty*

Product #'s MIM50, MIM75, MIM100, MIM130 have One (1) year Parts & On-site Labor*
Product #'s MIM250, MIM452, MIM600, MIM1000 Three (3) year Parts & On-site Labor*

**If a Filtration System is not installed and/or maintained and damage to the ice maker results, in the opinion of the manufacturer or their agent, the 3 Year Parts & Labor Warranty may be void.*

4 Year Extended Compressor Warranty

Replacement of a defective Compressor is limited to one (1) Compressor by TLC during the four (4) year extended period. The Legacy Companies shall replace the Compressor, part only, at no charge.

Warranty Exclusions

NO CONSEQUENTIAL DAMAGES: Maximum and The Legacy Companies are not responsible for economic loss or special, indirect or consequential including without limitation; loss or damage arising from food or product spoilage claims.

WARRANTY IS NOT TRANSFERABLE: This warranty is not transferable or assignable and applies only to the original verified purchaser.

NO IMPLIED WARRANTY OF MERCHANTABILITY OR FITNESS FOR PARTICULAR SERVICE:

There are no other warranties statutory, expressed, or implied, except that which is specifically found on the website. These warranties are exclusive and in lieu of all other warranties including implied and merchantability or fitness of a particular purpose.

IMPROPER ELECTRICAL CONNECTIONS: Maximum and The Legacy Companies are not responsible for the repair or replacement of failed or damaged components resulting from electrical power failure, the use of extension cords, low voltage or voltage spikes to the unit.

IMPROPER USAGE: Neither Maximum nor The Legacy Companies assumes liability for parts or labor coverage for component failure or other damages resulting from improper usage or installation or failure to clean and/or maintain the product as set forth in the Owner's Manual provided with each unit.

CONSUMABLES: This warranty does not include and is not limited to items such as; legs, feet, plastic components, splash shield, or gaskets.

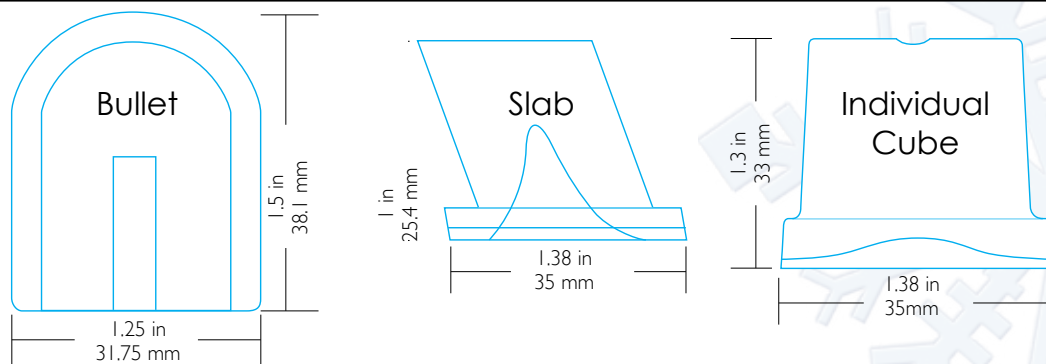
Visit http://maxximumfoodservice.com/forms_warranty_parts_warranty.pdf for a complete listing.

ADJUSTMENTS & CALIBRATIONS: Adjustments including calibrations, leveling, tightening of fasteners, or utility connections normally associated with the original installation are the responsibility of the dealer, installer or the end user and not the responsibility of Maximum or The Legacy Companies and will not be considered warranty issues.

CONSEQUENTIAL DAMAGES: This warranty does not cover any defect due to, or resulting from, ordinary wear and tear, handling, abuse, misuse, or harsh chemical action, nor shall it extend to any product from which the serial number has been removed or altered, or modifications made by unauthorized service personnel or damage by flood, fire or other acts of God.

OUTSIDE US & CANADA: This warranty does not apply to, and Maximum and The Legacy Companies are not responsible for any warranty claims made on products sold or used outside of the United States and Canada or any territories of the United States of America.

Ice Cube Sizes



A Comprehensive Line Of Refrigeration And Ice Machines

MAXXIMUM

A DIVISION OF THE LEGACY COMPANIES

Supermarkets — Institutions

HOTELS

Kiosks — Hospitals

RESTAURANTS

Bars — Resorts

SCHOOLS

Stadiums — C-Stores

RETAIL